

ARTSDESK VIRTUAL GALLERY: PALLAS PERIODICAL REVIEW

January 9, 2013 | Words: Rosa Abbott

CATEGORY: [ARTS & CULTURE](#), [Arts & Culture Features](#) | #TAGS [Aleana Egan](#), [Allan Hughes](#), [Artsdesk](#), [Brendan Earley](#), [Damien Flood](#), [Garrett Phelan](#), [Gavin Murphy](#), [Irish art](#), [Isabel Nolan](#), [Johnny Fitzsimmons](#), [Liam O'Callaghan](#), [Mark Cullen](#), [Mark O'Kelly](#), [Mark Swords](#), [Niamh O'Malley](#), [Padraic Moore](#), [Pallas projects](#), [Ronnie Hughes](#), [Rosa Abbott](#), [virtual gallery](#).

Share 39 Tweet 17 +1 0 Share 58

Aleana Egan - Like the Driving



Picture 1 of 12

◀ Back "Aleana Egan's day wears emerged as one of Next ▶

"Aleana Egan's day wears emerged as one of the more successful dialogues with the impressive but often overwhelming space of the Douglas Hyde Gallery. The title makes me think of reclining, and many things are literally laid out before us, reminding me of the way that Vietnamese artist Danh Vo lays out the leftover ornamentation of moribund colonial élan, but with a non-literal, alchemical poise that that work lacks. The combined elements: cardboard, tape, roofing felt, filler, paint, varnish, steel, plaster, amount to art that might be understood when all the humans are gone (having neatly folded their final garments). Elsewhere, moustachioed machine-parts hang like delicate extractions, or choice remnants of the ruins of the Western industrial adventure." - Gavin Murphy

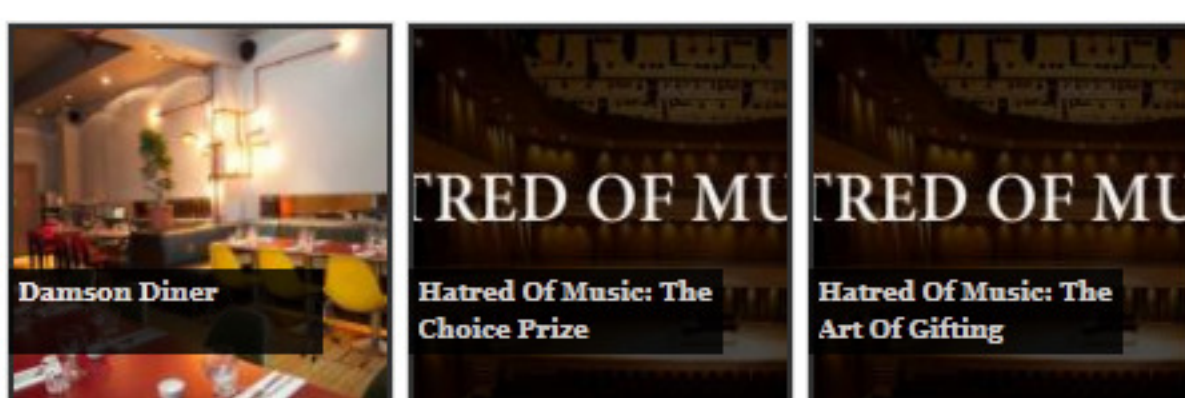
The Pallas Periodical Review might be Pallas's only commercial show of the year, but don't let that allow you to mistake it for a run-of-the-mill winter show. The need for a yearly review was inspired, in part, by the end-of-year lists often published in glossy art publications like Aesthetica and Art Review, but in some ways the exhibition is the antithesis of these.

Shunning the hollow listing off of names for something more tangible, Pallas's in-house curators Gavin Murphy and Mark Cullen enlisted the help of Eamonn Maxwell and Pádraic E. Moore to create a curatorial power-team that could survey the exhibition output of galleries and festivals nationwide, from EVA International to art college graduate shows. The results, as with last years' debut edition, are impressive: works from Aleana Egan (originally shown in the Douglas Hyde Gallery), Garrett Phelan (IMMA), Isabel Nolan (The Model), Aoibheann Greenan (EVA), and a good few more jostle for our attention in Pallas's rather charming ex-school house space.

We asked Pallas to take part in our series of online exhibitions. In our Virtual Gallery, a selection of works from the Pallas Periodical Review are presented alongside a few words by the curators, in which they reflect upon their choice.

Pallas Periodical Review runs at Pallas Projects/Studios until January 26th.

You may also like -



CURRENT

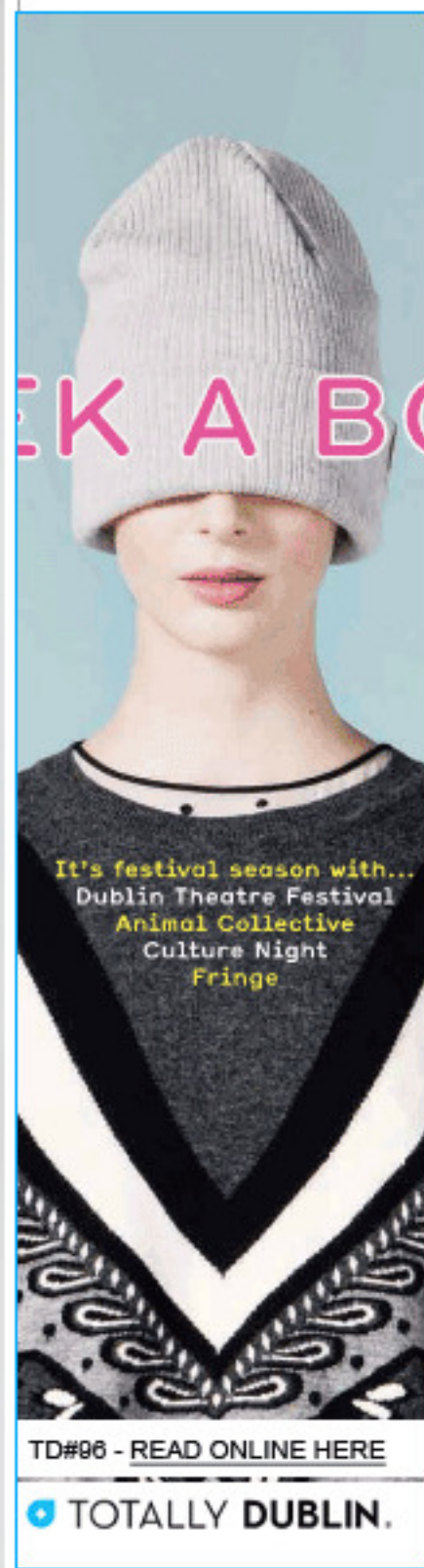
Arts & Culture Features
[Interview: Daniel Figeis - CITY HALL](#)

ARTS & CULTURE
[Studs](#)

ARTS & CULTURE
[Spoken Word in Dublin: An Interview with Oisín McKenna and Vickey Curtis](#)

ARTS & CULTURE
[Artsdesk Virtual Gallery: Pallas Periodical Review](#)

Arts & Culture Features
[The Photographic Story of Chair by Donal Moloney](#)



ARTS & CULTURE SECTIONS

- EXHIBITION LISTINGS
- FESTIVAL LISTINGS
- ARTS & CULTURE FEATURES
- EXHIBITION PREVIEWS
- FESTIVAL FEATURES



HAVE YOU READ?



[Dublin's 25 Best Independent Retailers](#)